



展開図 & パーツリスト

Exploded View Drawing and Parts List

型式

Model: **D250STFR-A**

製品番号

Model Number: **1H00424MN**

The part list and exploded view drawing as attached below indicate the full list of parts for the above mentioned pump model.

When ordering parts take care to select the correct model pump and required parts. Also be aware that models may change over time as improvements are made so cross-referencing the pumps serial number assembly date and service code are also recommended.

If you require specific spare parts you can also use this form to place your order.

For more information specific to your pump please refer to the pumps Service Book and Operation Manual available separately.

Please contact your Pump Distributor or YTS directly for more information.

上記ポンプは以下のパーツリストと展開図の部品により構成されております。

部品をご購入の際はポンプ型式、必要部品をご確認ください。

製品は改善のため変更されることがあるので、シリアルナンバー、組立日、サービスコードが必要です。

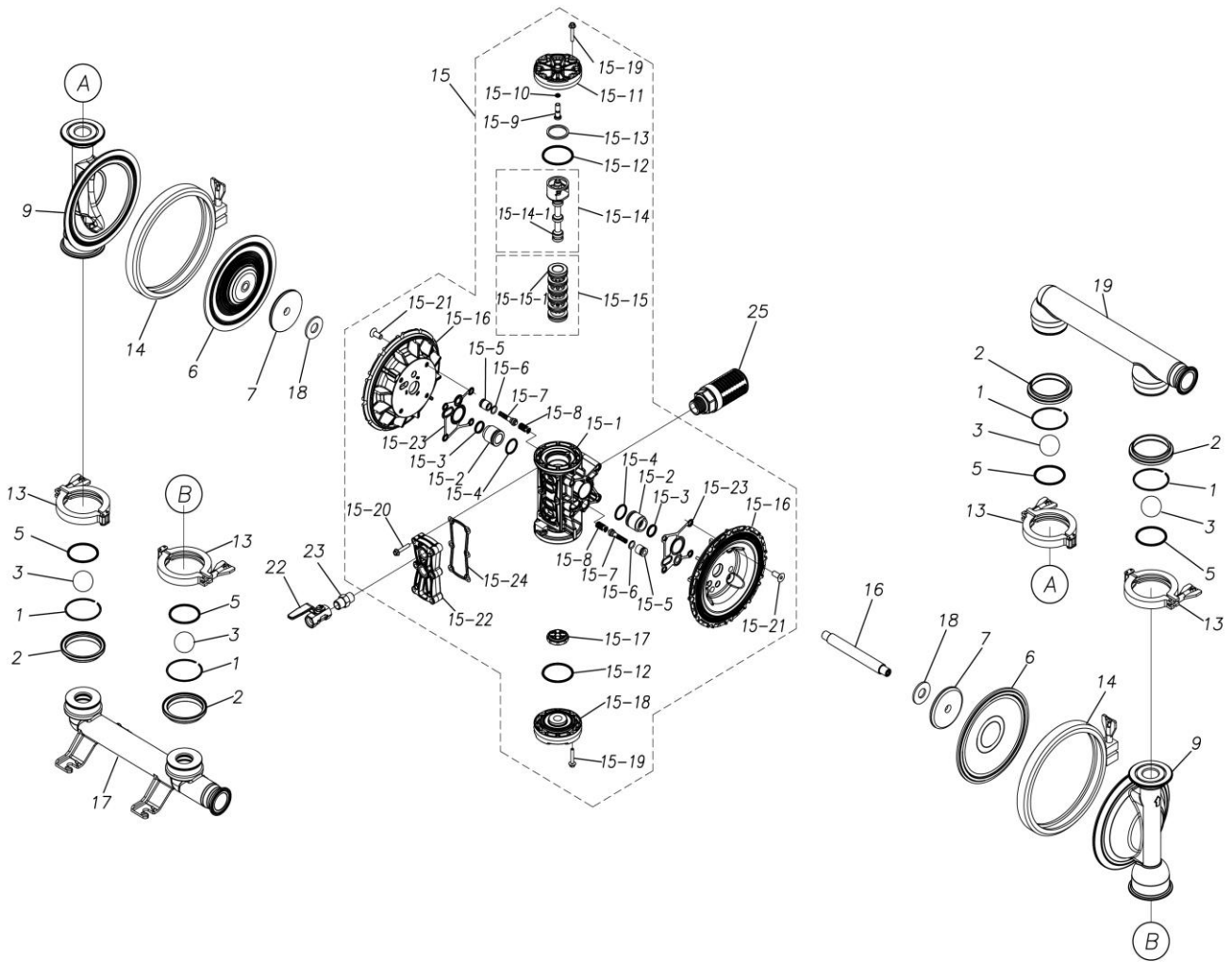
特注部品の注文にもこちらの用紙をご利用いただけます。

ポンプ詳細につきましては別にご用意しておりますポンプサービスブック、取扱説明書をご参照ください。

ご不明な点がございましたら代理店もしくは直接YTSまでご連絡ください。

YTS JAPAN Co.,Ltd.

www.yts-pump.com



■ Parts List

D250STFR-A

1H00424MN

Ref.No.	Parts No.	Description	Parts Component	Remark
1	1H30170MB	RETAINING RING	4	
2	1H30176SM	FLANGE	4	
3	1H20019TM	BALL	4	
5	9S1TG0050	O RING G-50	4	
6	1H20107TB	DIAPHRAGM	2	
7	1H30164TM	CENTER DISK	2	
9	1H20108SM	OUT CHAMBER	2	
13	1H30168MB	CLAMP	4	
14	1H30169MB	CLAMP	2	
15	1H10055MN	BODY ASSEMBLY	1	

Ref.No.	Parts No.	Description	Parts Component	Remark
15-1	1H30171MM	BODY	1	The parts of #15 are available with a set as [1H10055MN:BODY ASSEMBLY]. This is also available individually.
15-2	1H30107MM	THROAT BEARING	2	
15-3	9S2BA0018	PACKING	2	
15-4	9S1BJ2023	O RING JASO-2023	2	
15-5	1H30187MB	PILOT VALVE SEAT	2	
15-6	9S1BJ1011	O RING JASO-1011	2	
15-7	1H10009MK	PILOT VALVE ASSEMBLY	2	
15-8	1H30020MM	SPRING	2	
15-9	1H30028MM	RESET BUTTON	1	
15-10	9S1BP0005	O RING P-5	1	
15-11	1H30167MM	CAP A	1	
15-12	9S1BG0055	O RING G-55	2	
15-13	1H30032MB	PACKING	1	
15-14	1H10002MK	C SPOOL ASSEMBLY (Looped C®)	1	
15-14-1	1H30023MM	SEAL RING	5	The parts of #15-14 are available with a set as [1H10002MK:C SPOOL ASSEMBLY (Looped C®)]. This is also available individually.
15-15	1H10006MK	SLEEVE ASSEMBLY	1	The parts of #15 are available with a set as [1H10055MN:BODY ASSEMBLY]. This is also available individually.
15-15-1	9S1BJ2030	O RING JASO-2030	6	The parts of #15-15 are available with a set as [1H10006MK:SLEEVE ASSEMBLY]. This is also available individually.
15-16	1H30172MM	AIR CHAMBAER	2	The parts of #15 are available with a set as [1H10055MN:BODY ASSEMBLY]. This is also available individually.
15-17	1H30030MB	CUSHION	1	
15-18	1H30173MM	CAP B	1	
15-19	9B2210525	BOLT M5 × 25	8	
15-20	9B2210530	BOLT M5 × 30	6	
15-21	9B5290801	BOLT M8 × 20	8	
15-22	1H30174MN	COVER	1	
15-23	1H30102MB	PACKING BODY	2	
15-24	1H30103MB	PACKING COVER	1	
16	1H30165TM	CENTER ROD	1	
17	1H20105SP	IN MANIFOLD	1	
18	1H30016MB	CUSHION	2	
19	1H20106SP	OUT MANIFOLD	1	
22	1H90013MN	BALL VALVE	1	
23	9P12N0303	NIPPLE	1	
25	1H90003MK	SILENCER	1	