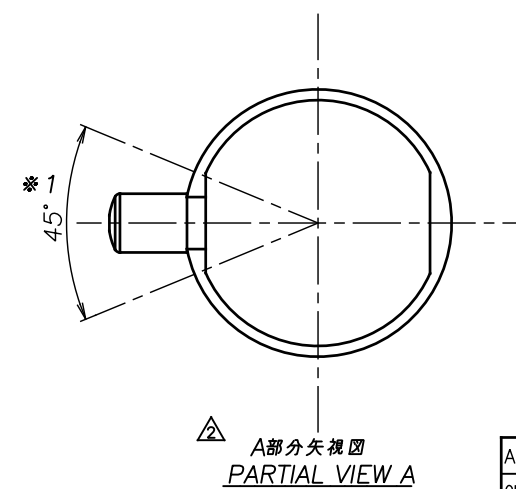
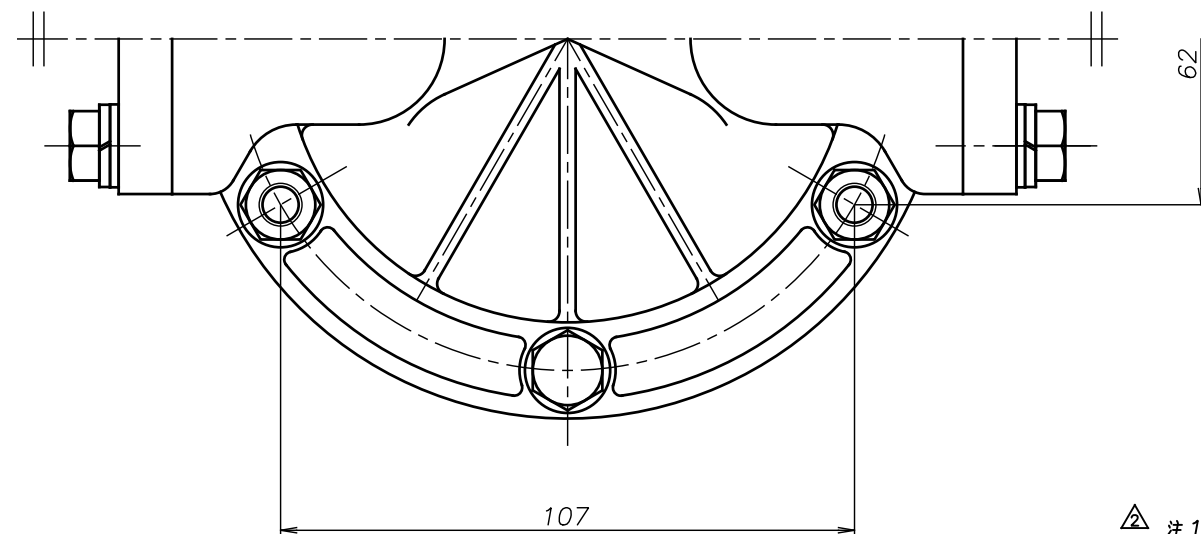
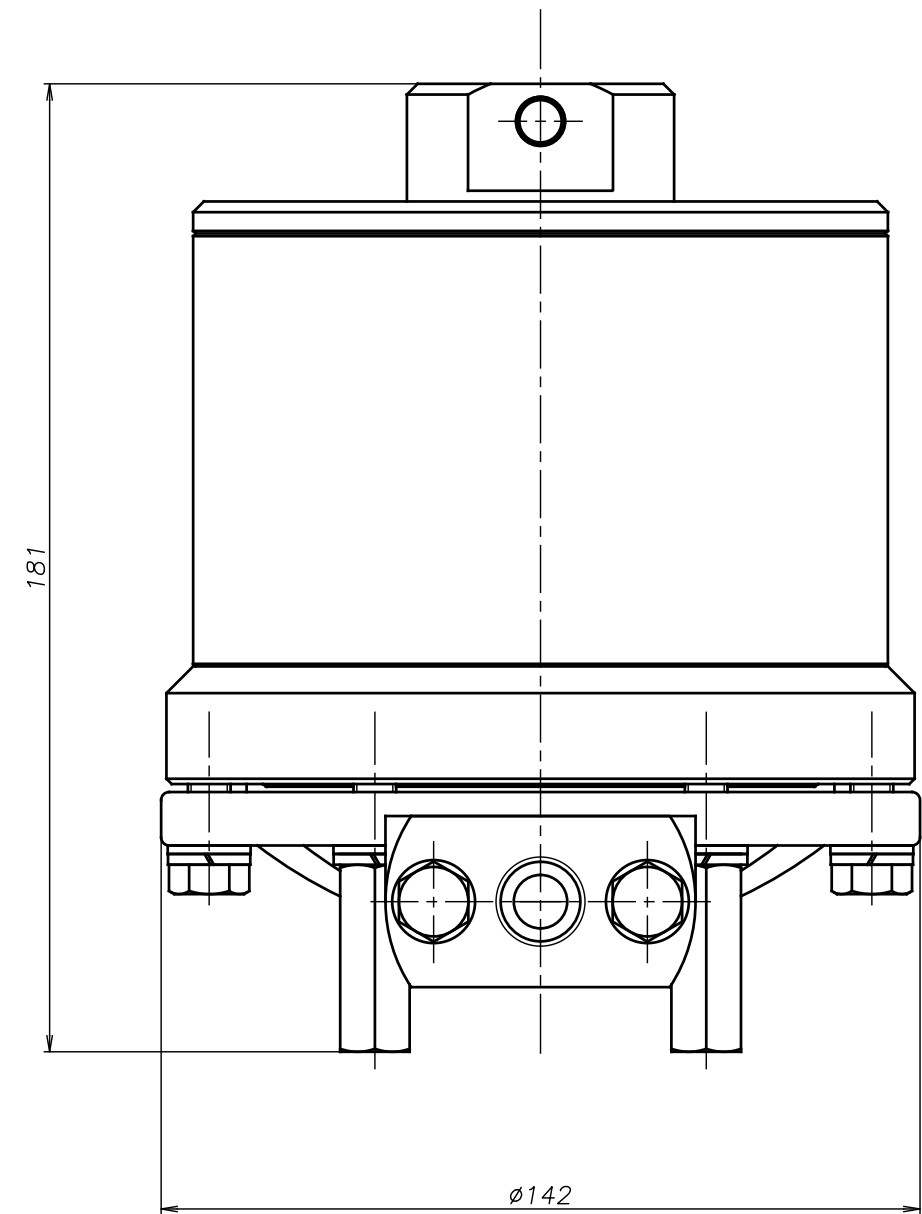
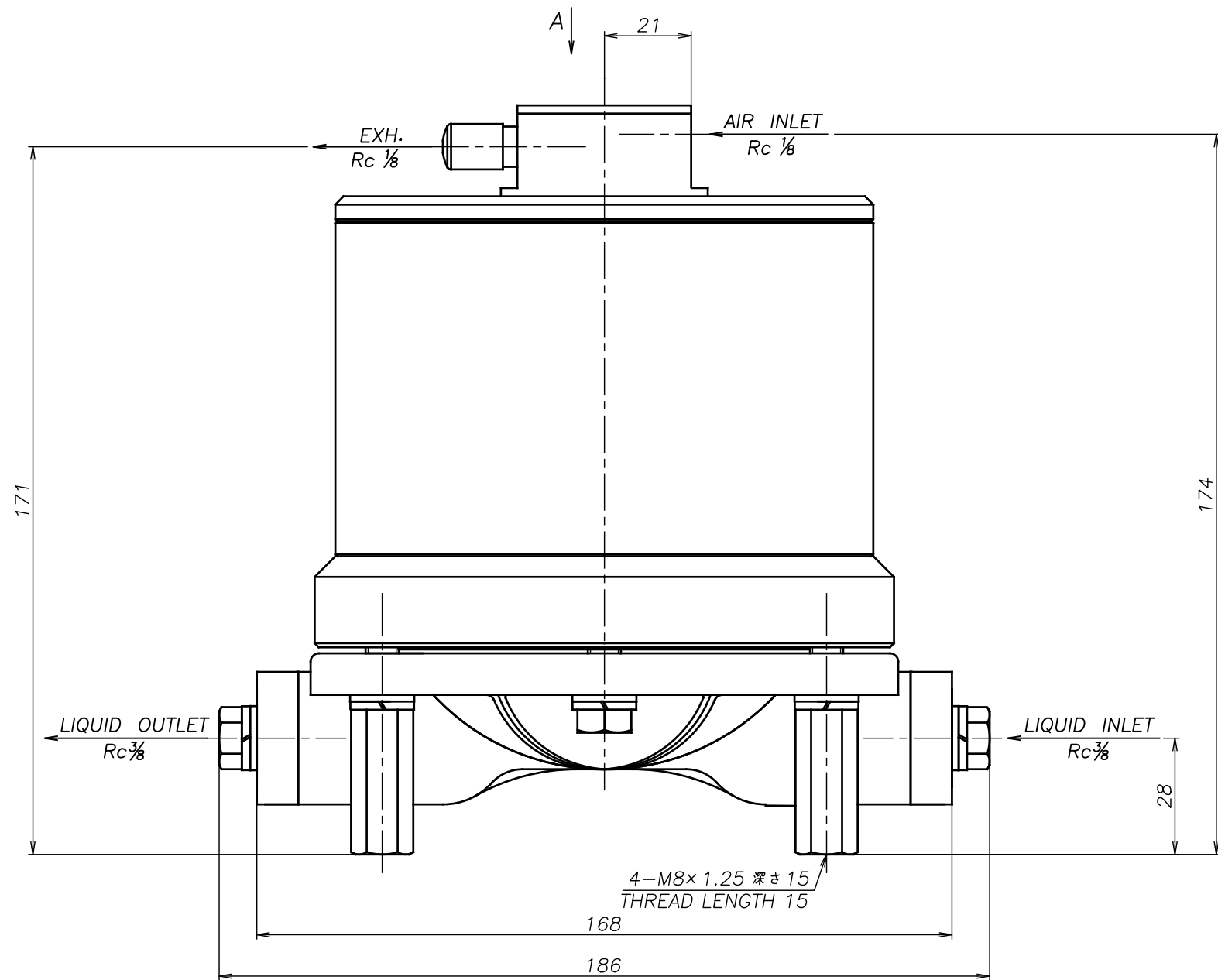


SYM	DWG.NO	CHANGE NO	DATE	REV'D BY
△	ALL	1DE0010	'16. 6.16	S.Murata
△	ALL	1BE0005	'19.10.28	K.Nakada
△	ALL	1BE0006 異記訂正	'20. 6.23	K.Nakada



△ 注1) AIR INLET, EXH.は $\ast 1$ の範囲で固定されています
 △ NOTE:1) AIR INLET & EXH. port are fixed in the range of $\ast 1$.

△10 AS	THIRD ANG. PROJ.	DWG.NO.	1D00086YP-C
SCALE Free			
△10 AH	THIRD ANG. PROJ.	DWG.NO.	1D00085YP-C
SCALE Free			
△10 AT	THIRD ANG. PROJ.	DWG.NO.	1D00084YP-C
SCALE Free			
△10 AN	THIRD ANG. PROJ.	DWG.NO.	1D00083YP-C
SCALE Free			
APP'D BY '20. 6.23 S.Murata	THE DWG. OF: ダンパアセンブリ		
CHECKED BY '20. 6.23 K.Nakano	DAMPER ASSEMBLY		
DRAWN BY '20. 6.23 K.Nakada	△10 AC	THIRD ANG. PROJ.	DWG.NO.
YTS Co., Ltd JAPAN	SCALE Free		1D00082YP-C