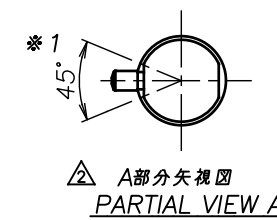
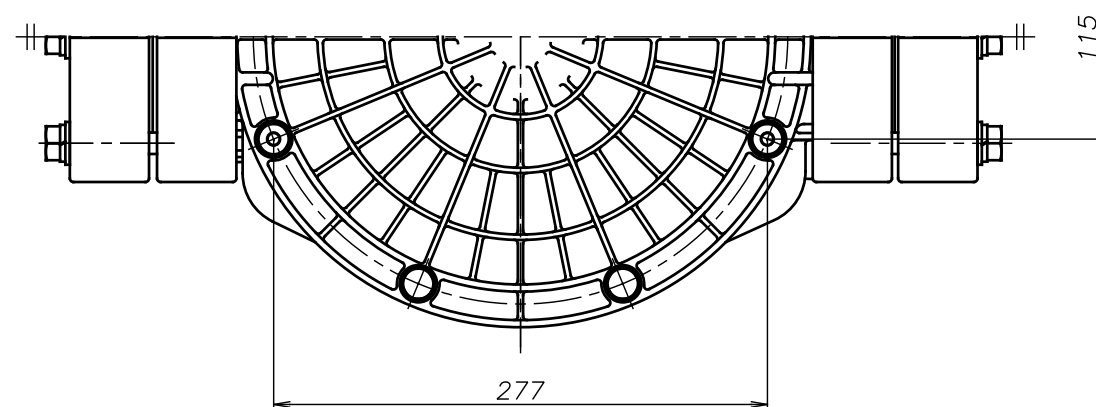
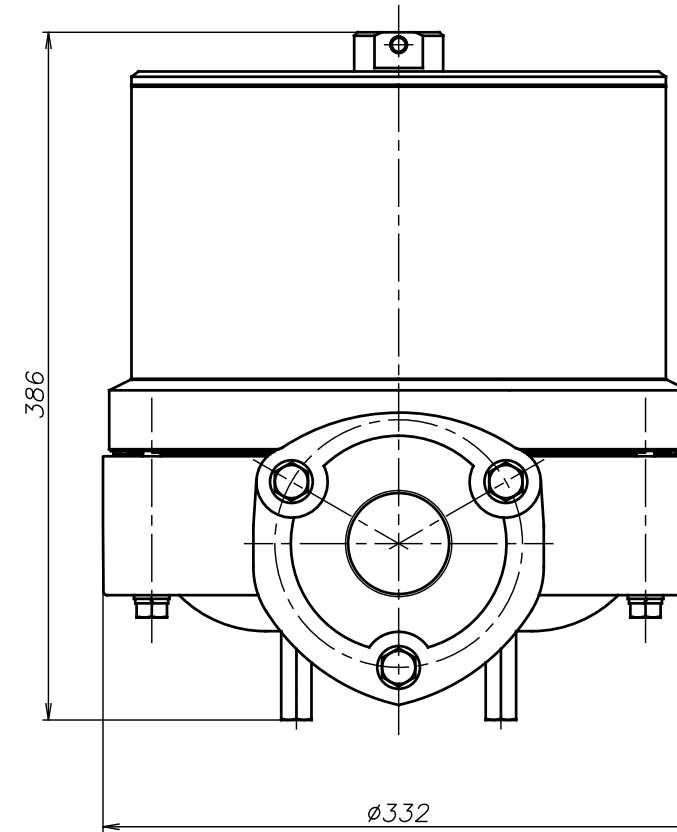
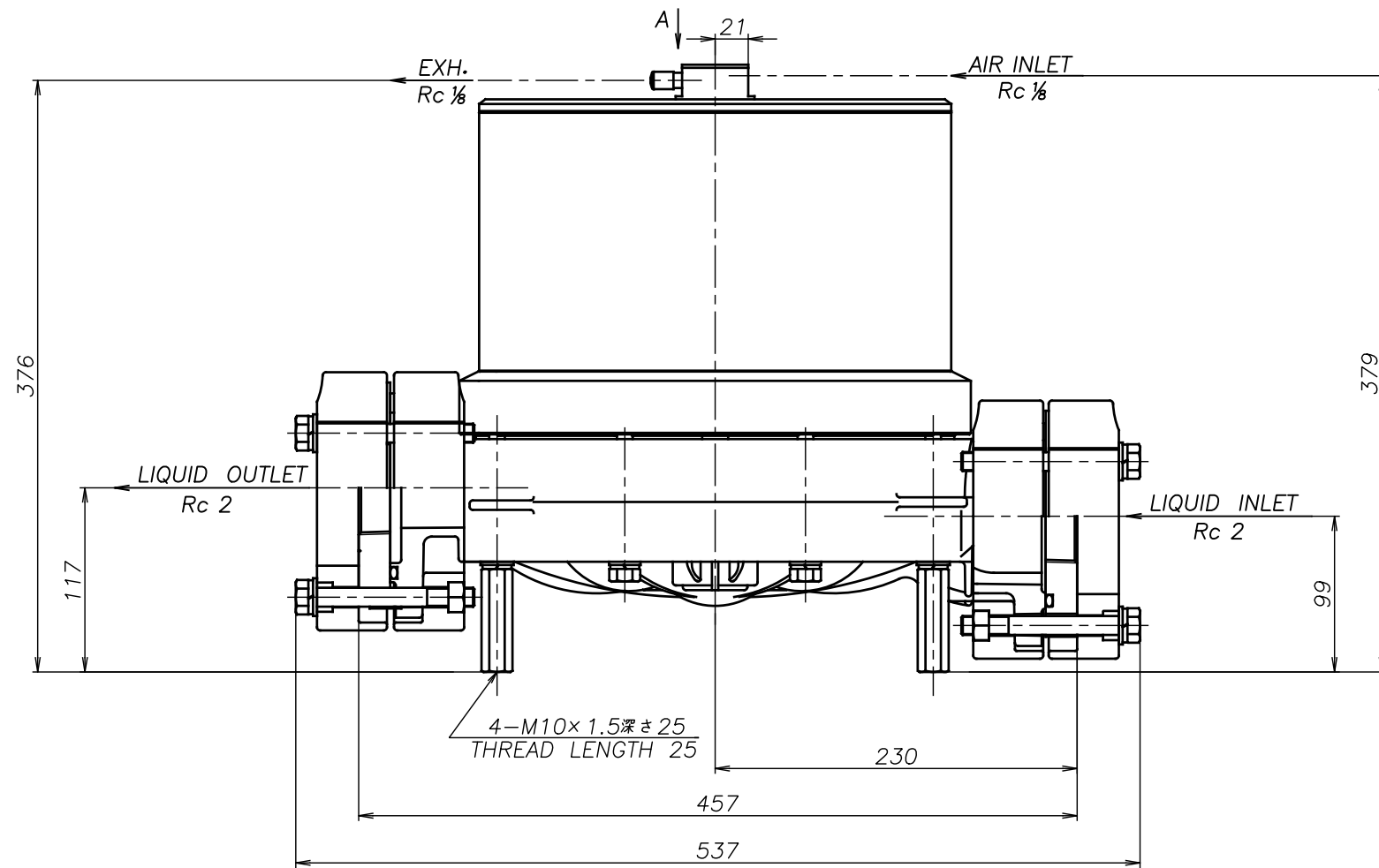


SYM	DWG.NO	CHANGE NO	DATE	REV'D BY
△	ALL	1ME0008	'16. 6.16	S.Murata
△	ALL	1BE0005	'19.10.28	K.Nakada
△	ALL	1BE0006 異記訂正	'20. 6.23	K.Nakada



△ 注1) AIR INLET, EXH.は ※1 の範囲で固定されています  
 △ NOTE:1) AIR INLET & EXH. port are fixed in the range of ※1.

△50 GS	THIRD ANG. PROJ.	DWG.NO.
	Free	1M00164YP-C
△50 GH	THIRD ANG. PROJ.	DWG.NO.
	Free	1M00163YP-C
△50 GT	THIRD ANG. PROJ.	DWG.NO.
	Free	1M00162YP-C
△50 GV	THIRD ANG. PROJ.	DWG.NO.
	Free	1M00161YP-C
△50 GE	THIRD ANG. PROJ.	DWG.NO.
	Free	1M00160YP-C
△50 GN	THIRD ANG. PROJ.	DWG.NO.
	Free	1M00159YP-C

APP'D BY	'20. 6.23 S.Murata	THE DWG. OF:
CHECKED BY	'20. 6.23 K.Nakano	DAMPER ASSEMBLY
DRAWN BY	'20. 6.23 K.Nakada	△50 GC
<b>YTS</b> Co., Ltd JAPAN	THIRD ANG. PROJ.	DWG.NO.
	Free	1M00158YP-C