

TC-X

Exploded View Drawing and Parts List

Model: **TC-X050PT**

Model Number: **1C00028MP**

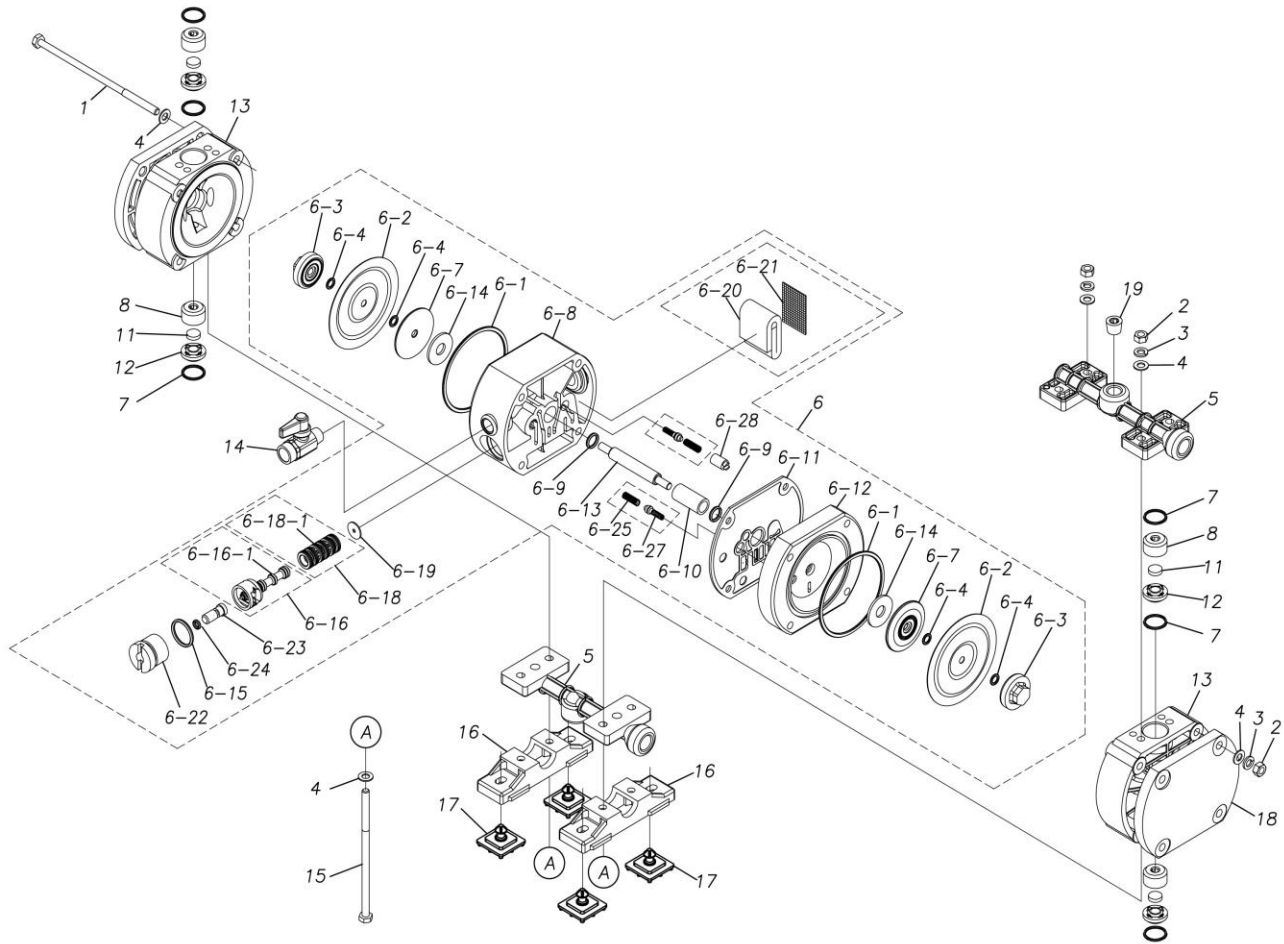
The part list and exploded view drawing as attached below indicate the full list of parts for the above mentioned pump model.

When ordering parts take care to select the correct model pump and required parts. Also be aware that models may change over time as improvements are made so cross-referencing the pumps serial number assembly date and service code are also recommended.

If you require specific spare parts you can also use this form to place your order.

For more information specific to your pump please refer to the pumps Service Book and Operation Manual available separately.

Please contact your Pump Distributor directly for more information.



■ Parts List

TC-X050PT

1C0028MP

| Ref.No. | Parts No. | Description | Parts Component | Remark |
|---------|-----------|------------------------------|-----------------|---|
| 1 | 9B1290604 | BOLT M6 × 160 | 4 | |
| 2 | 9N1210600 | NUT M6 | 8 | |
| 3 | 9W2210600 | SPRING LOCK WASHER M6 | 8 | |
| 4 | 9W1290600 | PLAIN WASHER M6 | 16 | |
| 5 | 1C20031PP | MANIFOLD | 2 | |
| 6 | 1C10012MP | BODY ASSEMBLY | 1 | |
| 6-1 | 9S1BG0070 | O RING G-70 | 2 | |
| 6-2 | 1C20007T2 | DIAPHRAGM | 2 | |
| 6-3 | 1C20033PB | CENTER DISK | 2 | |
| 6-4 | 9S1TP0006 | O RING P-6 | 4 | |
| 6-7 | 1C30032MM | CENTER DISK | 2 | |
| 6-8 | 1C30008MP | BODY L | 1 | The parts of #6 are available with a set as [1C10012MP:BODY ASSEMBLY]. This is also available individually. |
| 6-9 | 9S2BA0010 | PACKING | 2 | |
| 6-10 | 1C30009MB | BUSHING | 1 | |
| 6-11 | 1C30010MB | GASKET | 1 | |
| 6-12 | 1C30011MM | BODY S | 1 | |
| 6-13 | 1C20009MM | CENTER ROD | 1 | |
| 6-14 | 1H30027MB | CUSHION | 2 | |
| 6-15 | 9S1BP0020 | O RING P-20 | 1 | |
| 6-16 | 1C10017MK | C SPOOL ASSEMBLY (Looped C®) | 1 | |

The parts of #6-16 are available with a set as [1C10017MK:C SPOOL ASSEMBLY (Looped C®)]. This is also available individually.

| Ref.No. | Parts No. | Description | Parts Component | Remark |
|---------|-----------|----------------------|-----------------|--|
| 6-16-1 | 1C30024MM | SEAL RING | 5 | |
| 6-18 | 1C10011MK | SLEEVE ASSEMBLY | 1 | The parts of #6 are available with a set as [1C10012MP:BODY ASSEMBLY]. This is also available individually. |
| 6-18-1 | 9S1B90005 | O RING | 6 | The parts of #6-18 are available with a set as [1C10011MK:SLEEVE ASSEMBLY]. This is also available individually. |
| 6-19 | 1C30013MB | CUSHION | 1 | The parts of #6 are available with a set as [1C10012MP:BODY ASSEMBLY]. This is also available individually. |
| 6-20 | 1C30014MB | SILENCER | 1 | |
| 6-21 | 1C30015MB | MESH | 1 | |
| 6-22 | 1C30016MM | CAP | 1 | |
| 6-23 | 1C30017MM | RESET BUTTON | 1 | |
| 6-24 | 9S1BP0005 | O RING P-5 | 1 | |
| 6-25 | 1C30018MM | SPRING | 2 | |
| 6-27 | 1C10004MK | PILOT VALVE ASSEMBLY | 2 | |
| 6-28 | 1C30019MB | STOPPER | 1 | |
| 7 | 9S1TP0016 | O RING P-16 | 6 | |
| 8 | 1C20011PB | VALVE STOPPER | 4 | |
| 11 | 1C20012TM | FLAT VALVE | 4 | |
| 12 | 1C20034PB | VALVE SEAT | 4 | |
| 13 | 1C20029PM | OUT CHAMBER | 2 | |
| 14 | 1E90002MP | BALL VALVE | 1 | |
| 15 | 9B1290605 | BOLT M6 × 130 | 4 | |
| 16 | 1C30030MB | BASE | 2 | |
| 17 | 1C30031MB | RUBBER FEET | 4 | |
| 18 | 1C30036MB | REINFORCEMENT PLATE | 2 | |
| 19 | 1D20030PP | PLUG | 2 | |
| 20 | 1H90001MB | SEAL TAPE | 1 | |