

TC-X

Exploded View Drawing and Parts List

Model: **TC-X051TT**

Model Number: **1C00050MP**

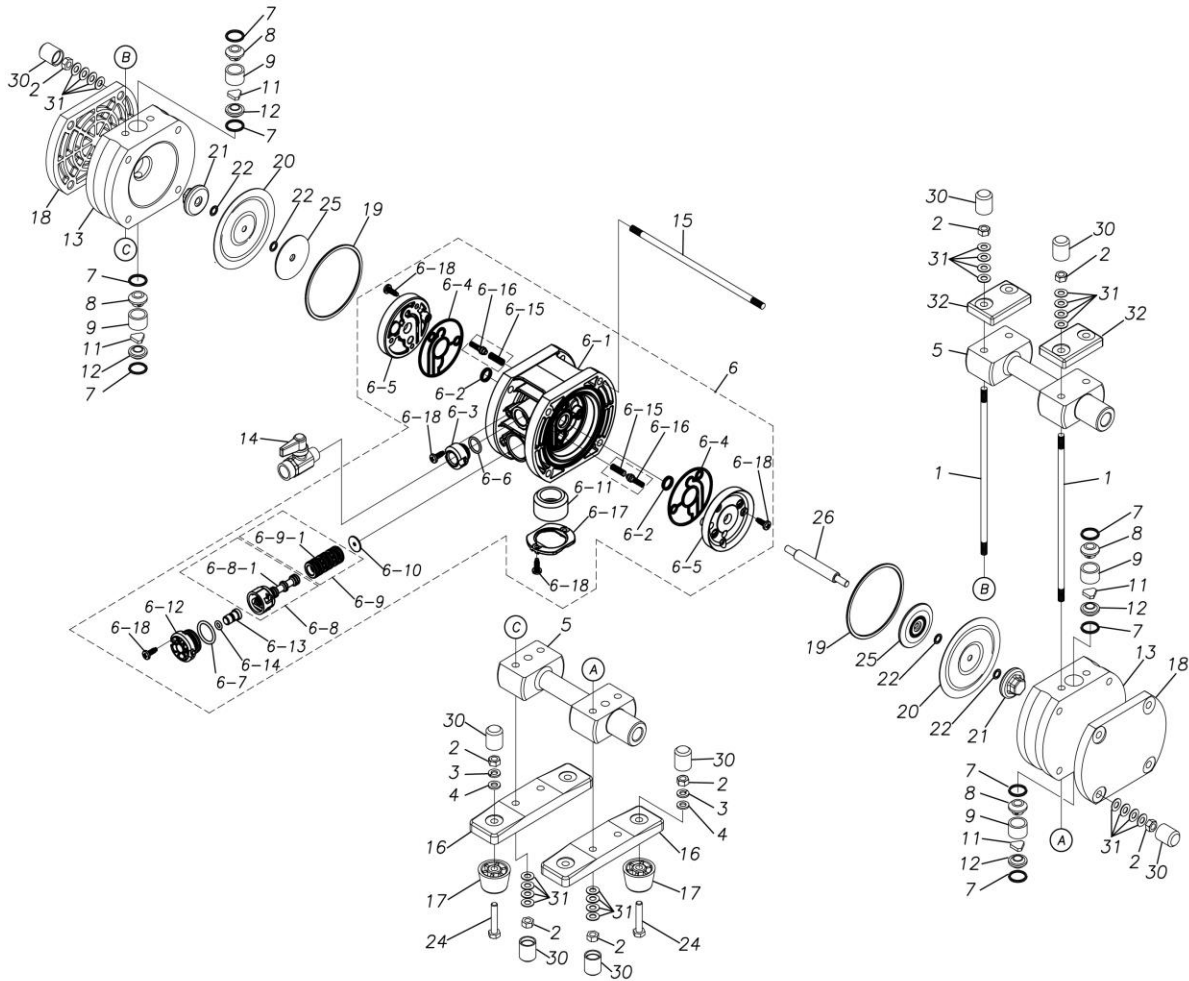
The part list and exploded view drawing as attached below indicate the full list of parts for the above mentioned pump model.

When ordering parts take care to select the correct model pump and required parts. Also be aware that models may change over time as improvements are made so cross-referencing the pumps serial number assembly date and service code are also recommended.

If you require specific spare parts you can also use this form to place your order.

For more information specific to your pump please refer to the pumps Service Book and Operation Manual available separately.

Please contact your Pump Distributor directly for more information.



■ Parts List

TC-X051TT

1C00050MP

Ref.No.	Parts No.	Description	Parts Component	Remark
1	1C30001MM	TIE ROD	4	
2	9N1210600	NUT M6	20	
3	9W2210600	SPRING LOCK WASHER M6	4	
4	9W1210600	PLAIN WASHER M6	4	
5	1C20001TP	MANIFOLD	2	
6	1C10068MP	BODY ASSEMBLY	1	The parts of #6 are available with a set as [1C10068MP:BODY ASSEMBLY]. This is also available individually.
6-1	1C30076MB	BODY	1	
6-2	9S2VA0010	PACKING	2	
6-3	1C30079MP	CAP BODY IN	1	
6-4	1C30080MB	PACKING BODY	2	
6-5	1C30077MB	AIR CHAMBER	2	
6-6	9S1V90008	O RING	1	
6-7	9S1VP0018	O RING P-18	1	
6-8	1C10017MK	C SPOOL ASSEMBLY (Looped C®)	1	
6-8-1	1C30024MM	SEAL RING	5	The parts of #6-8 are available with a set as [1C10017MK:C SPOOL ASSEMBLY (Looped C®)]. This is also available individually.
6-9	1C10011MK	SLEEVE ASSEMBLY	1	The parts of #6 are available with a set as [1C10068MP:BODY ASSEMBLY]. This is also available individually.

Ref.No.	Parts No.	Description	Parts Component	Remark
6-9-1	9S1B90005	O RING	6	The parts of #6-9 are available with a set as [1C10011MK:SLEEVE ASSEMBLY]. This is also available individually.
6-10	1C30013MB	CUSHION	1	The parts of #6 are available with a set as [1C10068MP:BODY ASSEMBLY]. This is also available individually.
6-11	1E30033MB	SILENCER	1	
6-12	1C30078MB	CAP RESET BUTTON	1	
6-13	1C30081MM	RESET BUTTON	1	
6-14	9S1VP0005	O RING P-5	1	
6-15	1C30018MM	SPRING	2	
6-16	1C10004MK	PILOT VALVE ASSEMBLY	2	
6-17	1C30085MB	STOPPER SILENCER	1	
6-18	9T7224012	SCREW M4 × 12	12	
7	9S1TP0014	O RING P-14	8	
8	1C20002TM	VALVE STOPPER	4	
9	1C20003TM	VALVE GUIDE	4	
11	1C20017TM	FLAT VALVE	4	
12	1C20005TM	VALVE SEAT	4	
13	1C20006TM	OUT CHAMBER	2	
14	1E90002MP	BALL VALVE	1	
15	1C30002MM	TIE ROD	4	
16	1C30003GB	BASE	2	
17	1C30004MB	RUBBER FEET	4	
18	1C30036MB	REINFORCEMENT PLATE	2	
19	9S1VG0070	O RING G-70	2	
20	1C20007T2	DIAPHRAGM	2	
21	1C20008TM	CENTER DISK	2	
22	9S1TP0006	O RING P-6	4	
24	9B1210632	BOLT M6 × 32	4	
25	1C30086MM	CENTER DISK	2	
26	1C20009MM	CENTER ROD	1	
30	1E30037TB	CAP	20	
31	9W3210600	CONED DISK SPRING M6	64	
32	1C30005GB	REINFORCEMENT PLATE	2	