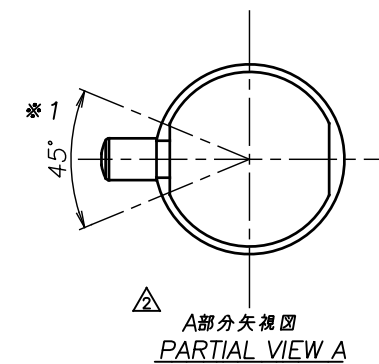
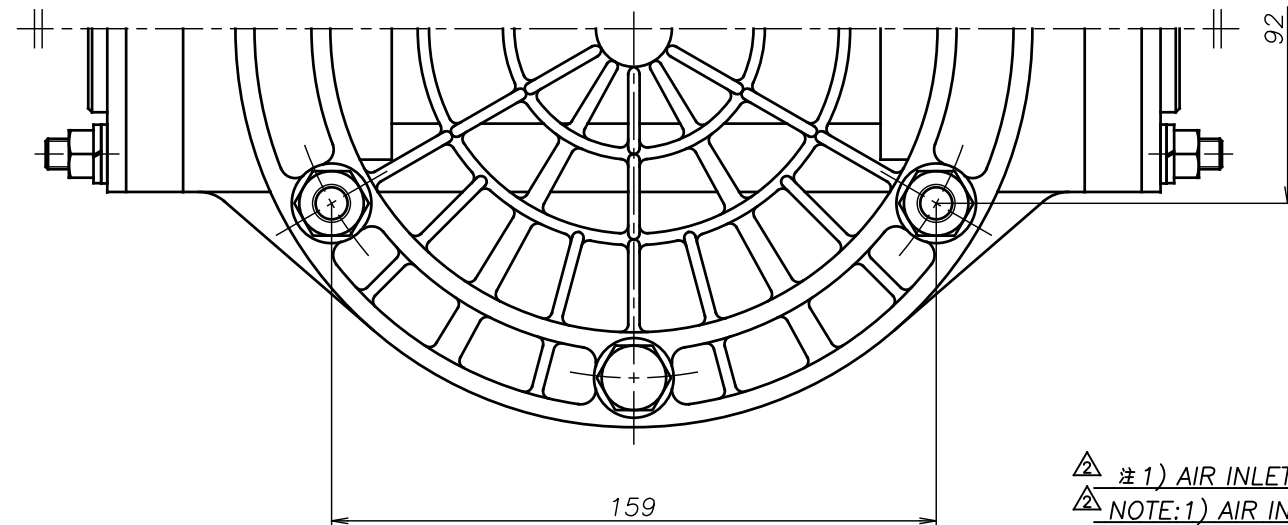
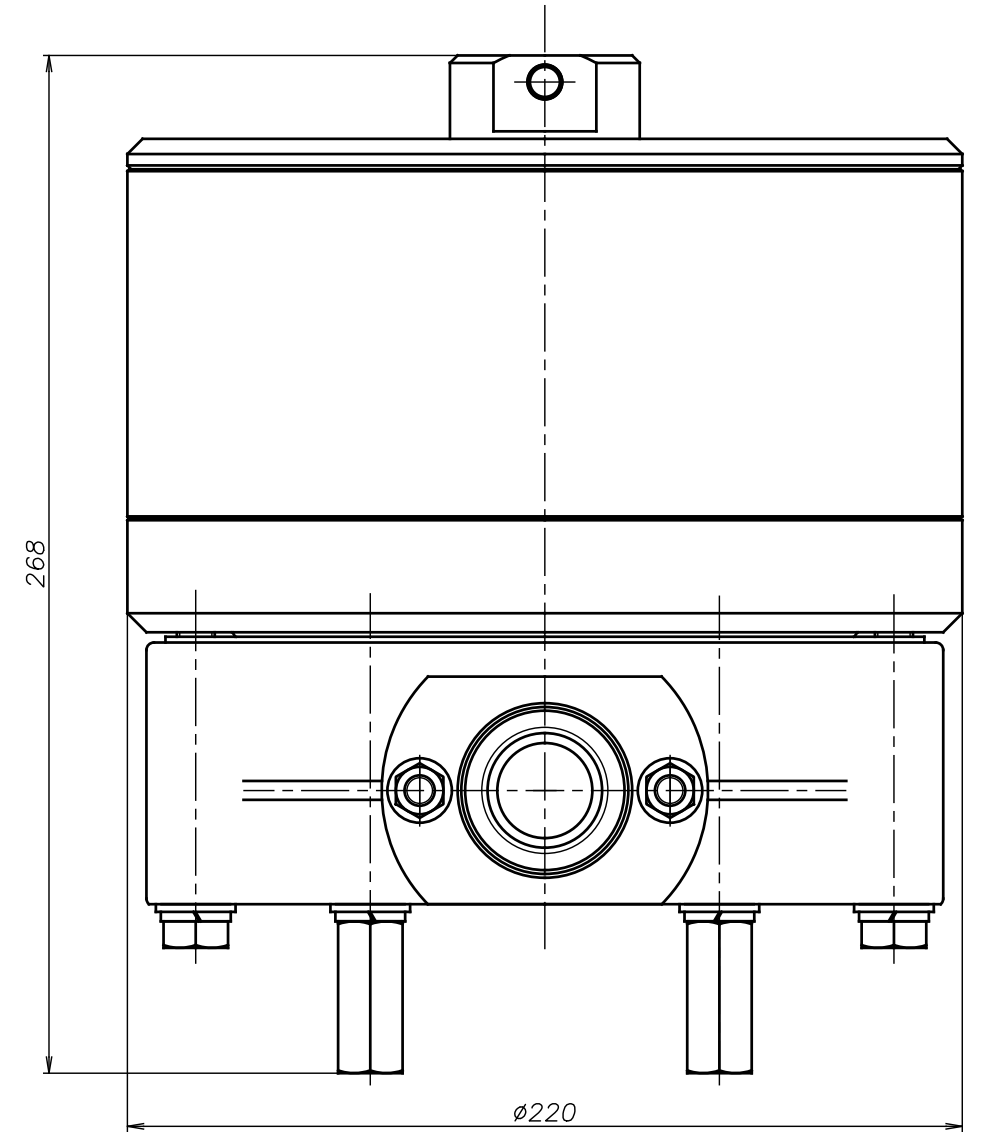
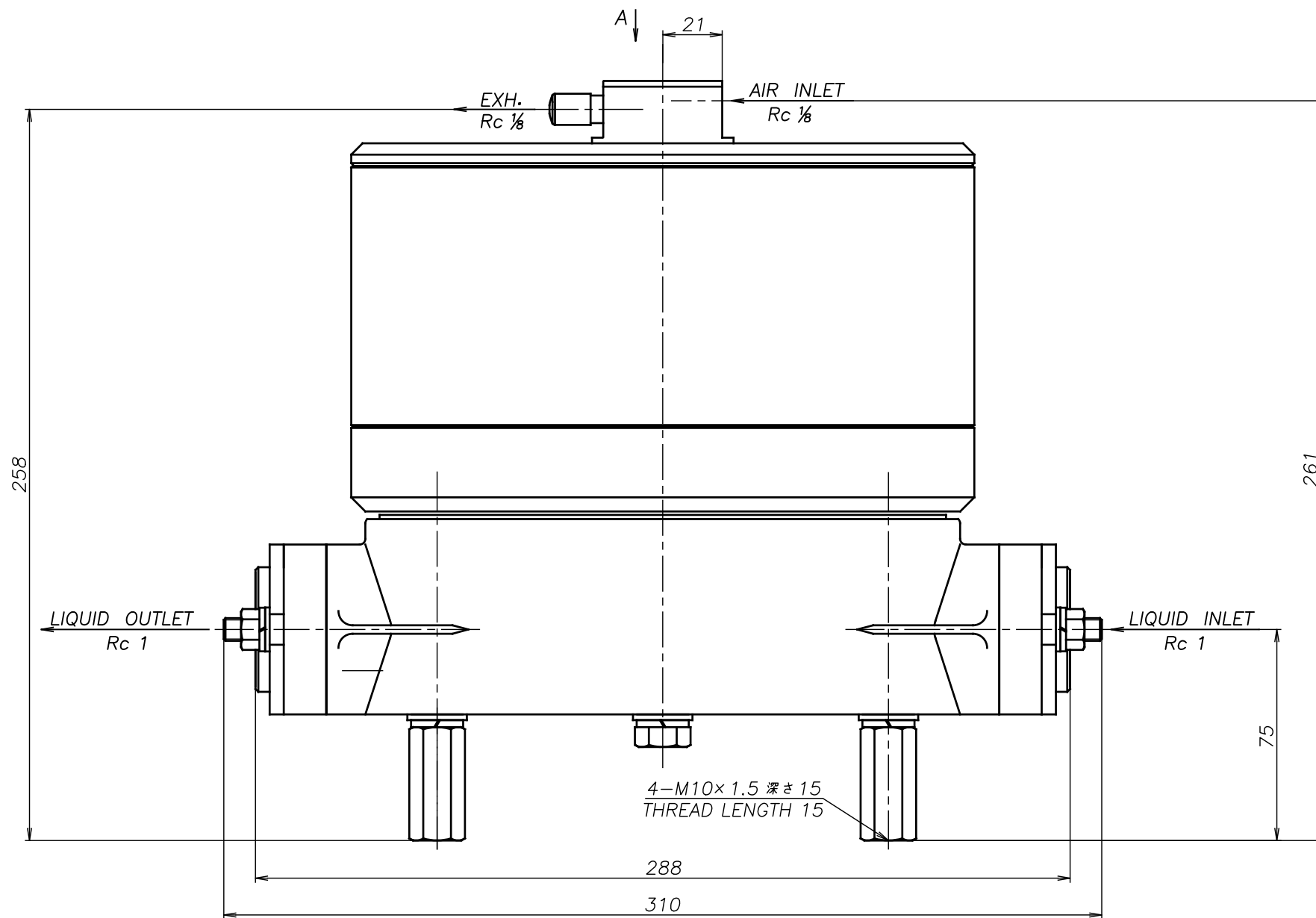


SYM	DWG.NO	CHANGE NO	DATE	REV'D BY
△	ALL	1HE0024	'16. 6.16	S.Murata
△	ALL	1BE0005	'19.10.28	K.Nakada
△	ALL	1BE0006 異記訂正	'20. 6.23	K.Nakada



△注1) AIR INLET, EXH.は ※1 の範囲で固定されています  
 △NOTE:1) AIR INLET & EXH. port are fixed in the range of ※1.

△CF-X25GS	THIRD ANG. PROJ.	DWG.NO.
	SCALE	Free 1H00353YP-C
△CF-X25GH	THIRD ANG. PROJ.	DWG.NO.
	SCALE	Free 1H00352YP-C
△CF-X25GT	THIRD ANG. PROJ.	DWG.NO.
	SCALE	Free 1H00351YP-C
△CF-X25GV	THIRD ANG. PROJ.	DWG.NO.
	SCALE	Free 1H00350YP-C
△CF-X25GE	THIRD ANG. PROJ.	DWG.NO.
	SCALE	Free 1H00349YP-C
△CF-X25GN	THIRD ANG. PROJ.	DWG.NO.
	SCALE	Free 1H00348YP-C

APP'D BY '20. 8.18 S.Murata  
 CHECKED BY '20. 8.18 K.Nakano  
 DRAWN BY '20. 8.18 K.Nakada

THE DWG. OF:  
 ダンパアセンブリ  
 DAMPER ASSEMBLY  
 △CF-X25GC  
 THIRD ANG. PROJ. DWG.NO.  
 SCALE Free 1H00347YP-C

**YTS** Co., Ltd JAPAN