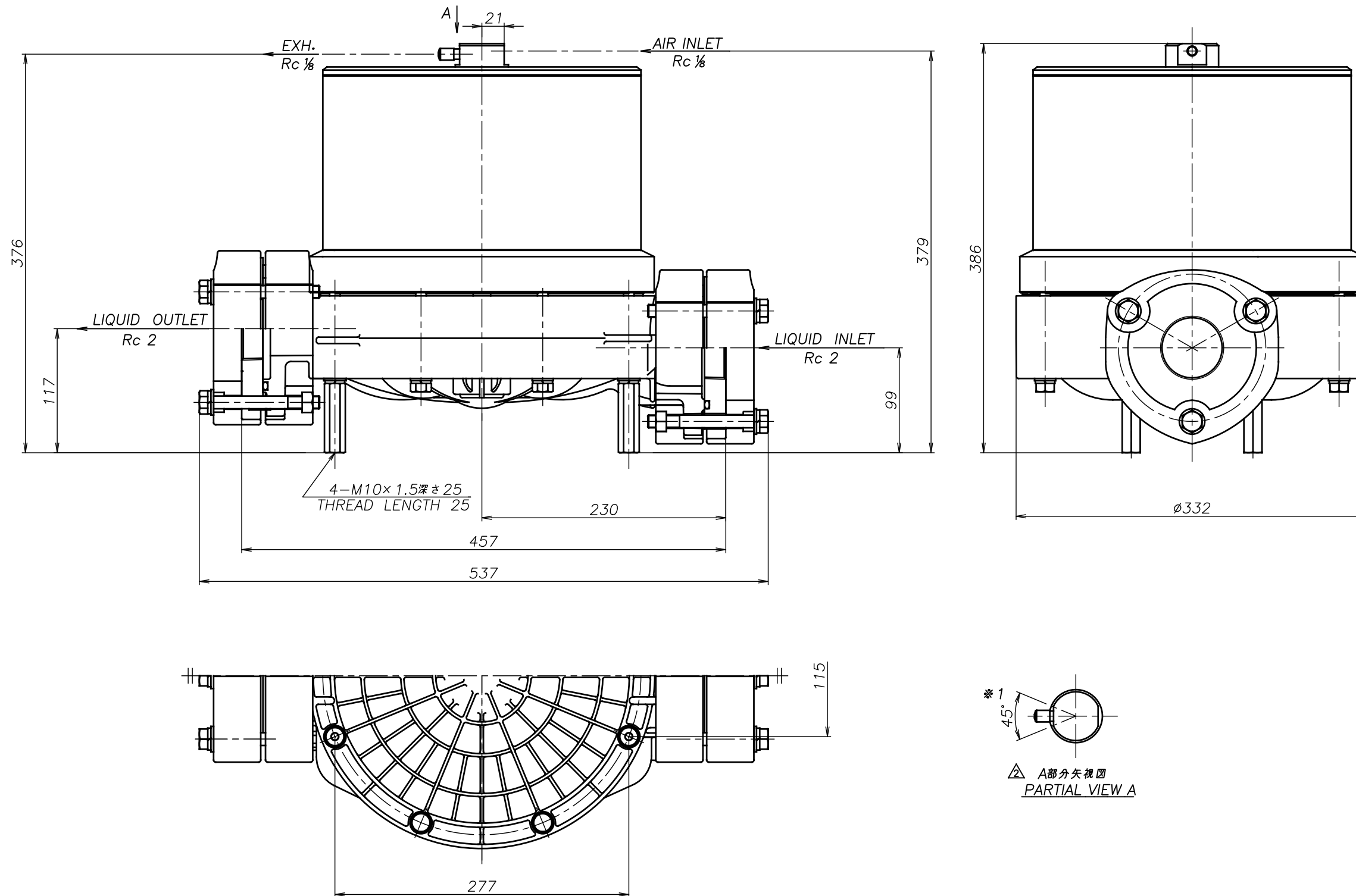


SYM	DWG.NO	CHANGE NO	DATE	REV'D BY
△	ALL	1ME0008	'16. 6.16	S.Murata
△	ALL	1BE0005	'19.10.28	K.Nakada
△	ALL	1BE0006 異記訂正	'20. 6.23	K.Nakada



△ 注1) AIR INLET, EXH.は ※1 の範囲で固定されています
 △ NOTE:1) AIR INLET & EXH. port are fixed in the range of ※1.

△CF-X50GS	THIRD ANG. PROJ.	DWG.NO.
	Free	1M00305YP-C
△CF-X50GH	THIRD ANG. PROJ.	DWG.NO.
	Free	1M00304YP-C
△CF-X50GT	THIRD ANG. PROJ.	DWG.NO.
	Free	1M00303YP-C
△CF-X50GV	THIRD ANG. PROJ.	DWG.NO.
	Free	1M00302YP-C
△CF-X50GE	THIRD ANG. PROJ.	DWG.NO.
	Free	1M00301YP-C
△CF-X50GN	THIRD ANG. PROJ.	DWG.NO.
	Free	1M00300YP-C

APP'D BY	'20. 8.18 S.Murata	THE DWG. OF:	ダンパアセンブリ
CHECKED BY	'20. 8.18 K.Nakano		DAMPER ASSEMBLY
DRAWN BY	'20. 8.18 K.Nakada		△CF-X50GC
	YTS Co., Ltd JAPAN	THIRD ANG. PROJ.	DWG.NO.
		SCALE	Free
			1M00299YP-C