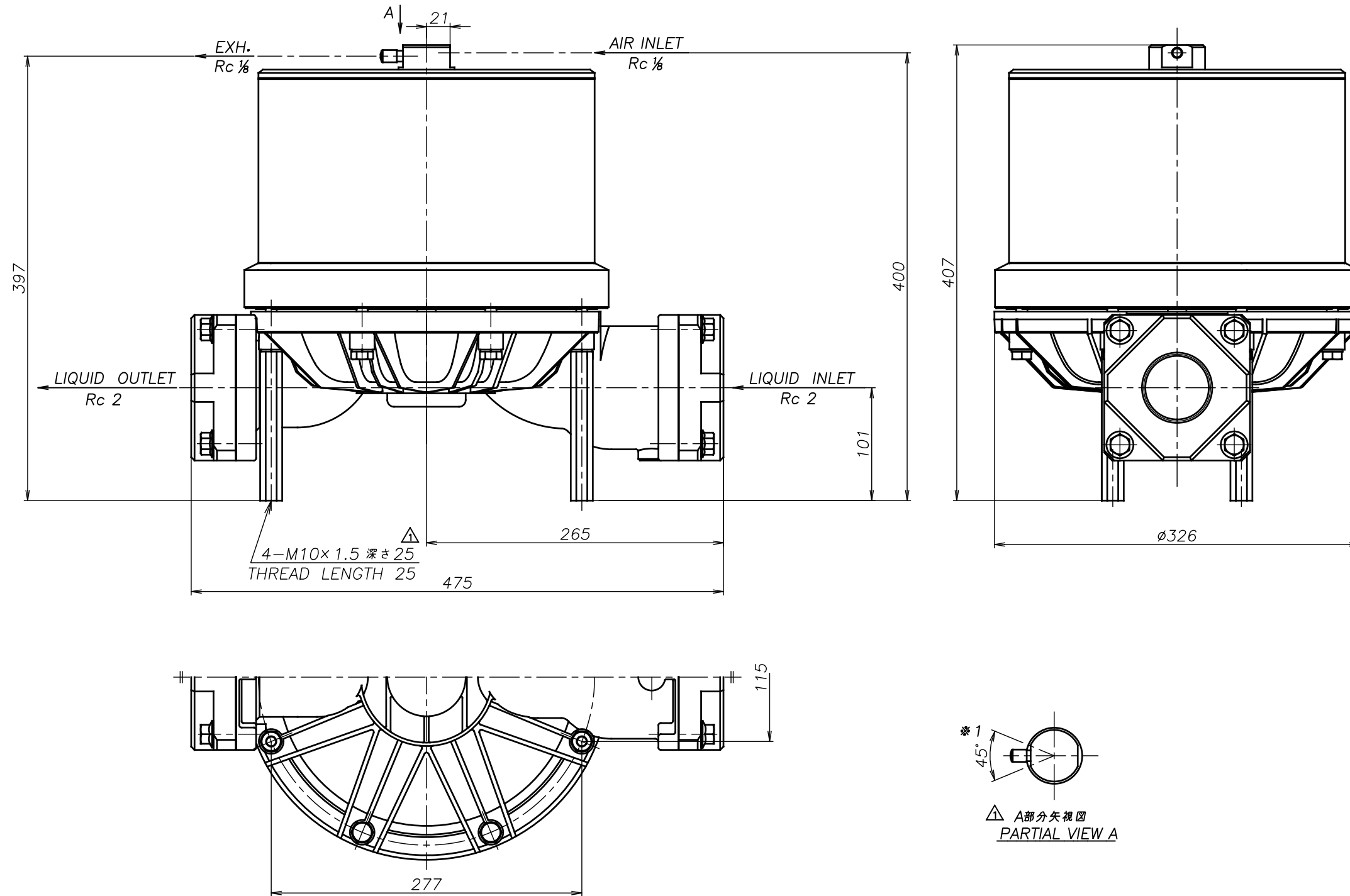


SYM	DWG.NO	CHANGE NO	DATE	REV'D BY
△	ALL	1ME0008	'16. 6.16	S.Murata
△	ALL	1BE0006 誤記訂正	'20. 6.23	K.Nakada



△ 注1) AIR INLET, EXH.は *1 の範囲で固定されています
 △ NOTE:1) AIR INLET & EXH. port are fixed in the range of *1.

CF-X50SS	THIRD ANG. PROJ.	DWG.NO.
	Free	1M00291YP-B
CF-X50SH	THIRD ANG. PROJ.	DWG.NO.
	Free	1M00290YP-B
CF-X50ST	THIRD ANG. PROJ.	DWG.NO.
	Free	1M00289YP-B
CF-X50SV	THIRD ANG. PROJ.	DWG.NO.
	Free	1M00288YP-B
CF-X50SE	THIRD ANG. PROJ.	DWG.NO.
	Free	1M00287YP-B
CF-X50SN	THIRD ANG. PROJ.	DWG.NO.
	Free	1M00286YP-B

APP'D BY '20. 8.18 S.Murata
 CHECKED BY '20. 8.18 K.Nakano
 DRAWN BY '20. 8.18 K.Nakada

THE DWG. OF:
 ダンパアセンブリ
 DAMPER ASSEMBLY
 CF-X50SC
 THIRD ANG. PROJ. DWG.NO.
 SCALE Free 1M00285YP-B

YTS Co., Ltd JAPAN