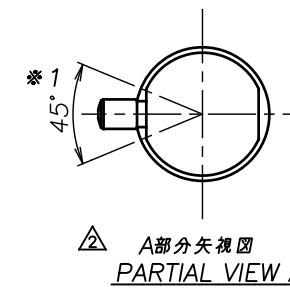
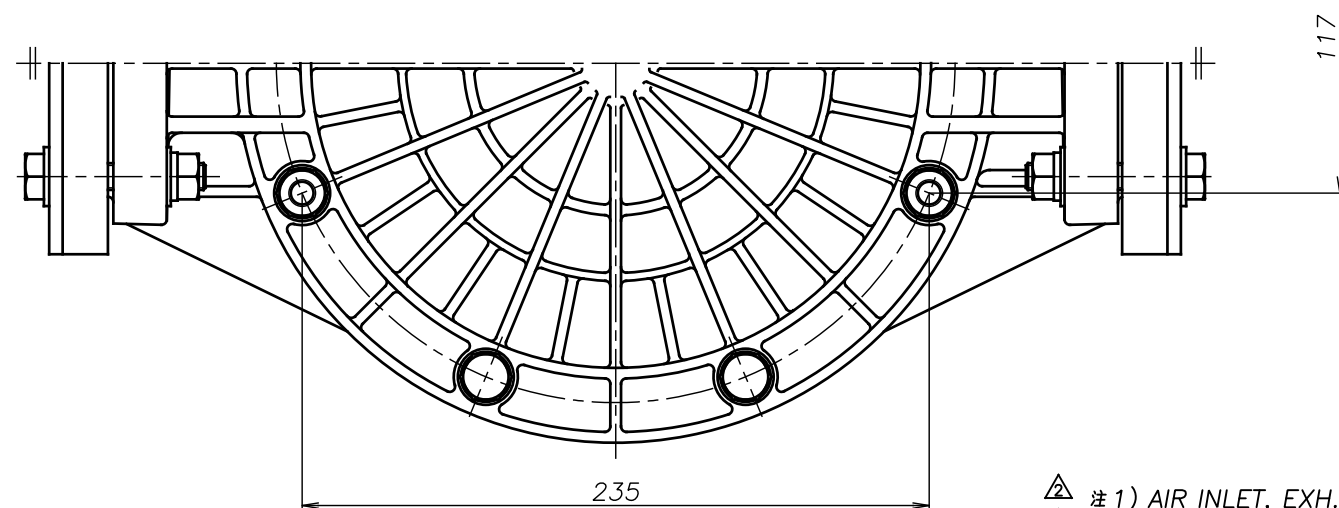
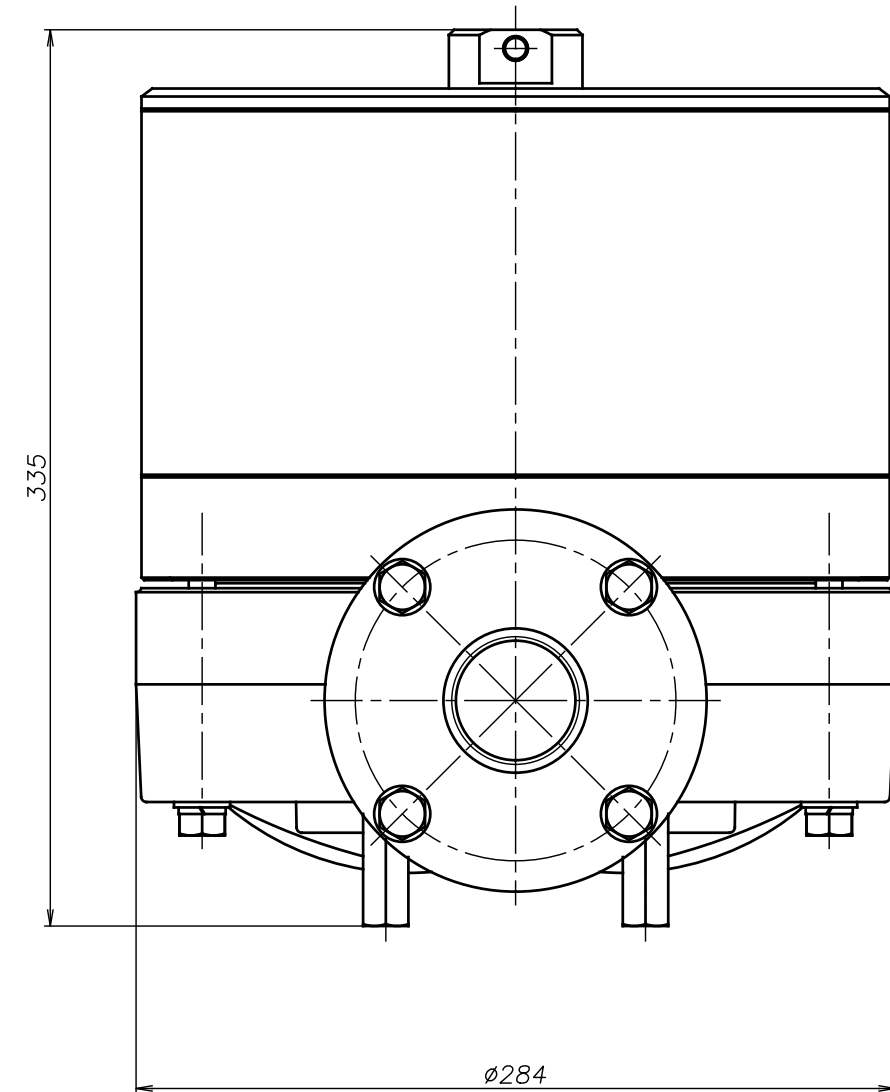
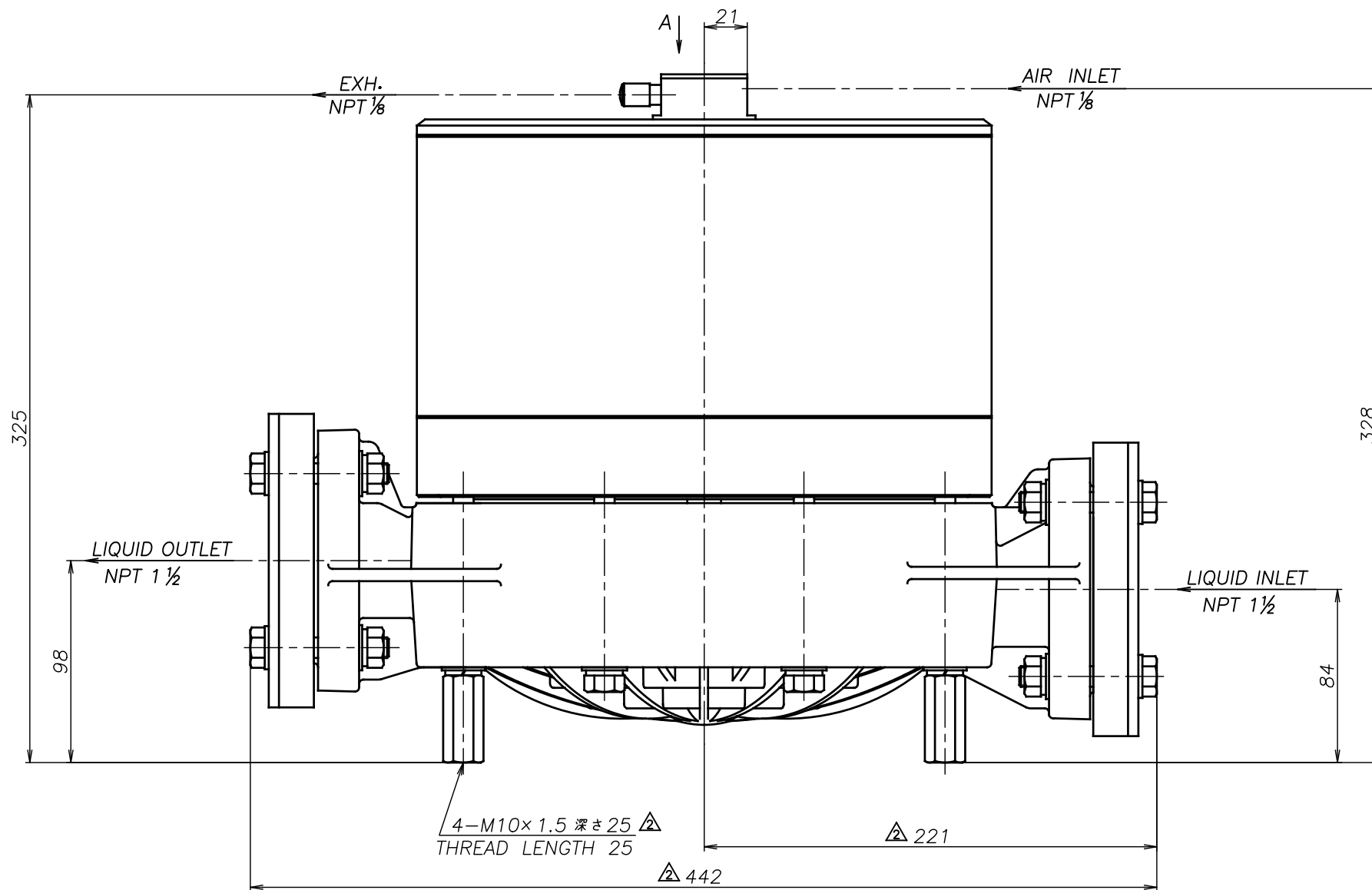


SYM	DWG.NO	CHANGE NO	DATE	REV'D BY
△	ALL	1LE0035	'18. 9. 3	K.Nakada
△	ALL	1BE0005	'19.10.28	K.Nakada
△	ALL	1BE0006 異記訂正	'20. 6.23	K.Nakada



△ 注1) AIR INLET, EXH.は *1 の範囲で固定されています
△ NOTE:1) AIR INLET & EXH. port are fixed in the range of *1.

△CF-X40GSN	THIRD ANG. PROJ.	DWG.NO.	SCALE	Free	1L00357YN-C
△CF-X40GHN	THIRD ANG. PROJ.	DWG.NO.	SCALE	Free	1L00356YN-C
△CF-X40GTN	THIRD ANG. PROJ.	DWG.NO.	SCALE	Free	1L00355YN-C
△CF-X40GVN	THIRD ANG. PROJ.	DWG.NO.	SCALE	Free	1L00354YN-C
△CF-X40GEN	THIRD ANG. PROJ.	DWG.NO.	SCALE	Free	1L00353YN-C
△CF-X40GNN	THIRD ANG. PROJ.	DWG.NO.	SCALE	Free	1L00352YN-C
THE DWG. OF:	DAMPER ASSEMBLY				
△CF-X40GCN	THIRD ANG. PROJ.	DWG.NO.	SCALE	Free	1L00351YN-C

APP'D BY '20. 8.18 S.Murata
CHECKED BY '20. 8.18 K.Nakano
DRAWN BY '20. 8.18 K.Nakada

YTS Co., Ltd JAPAN