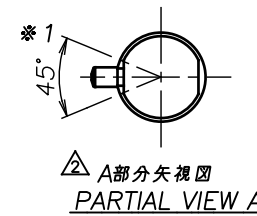
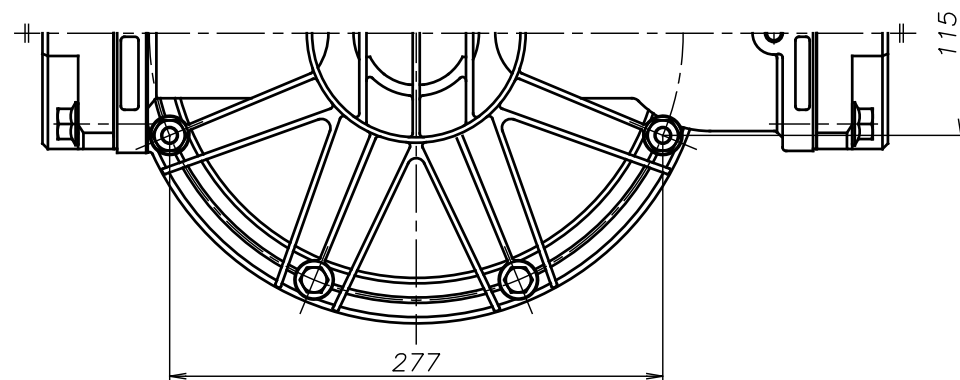
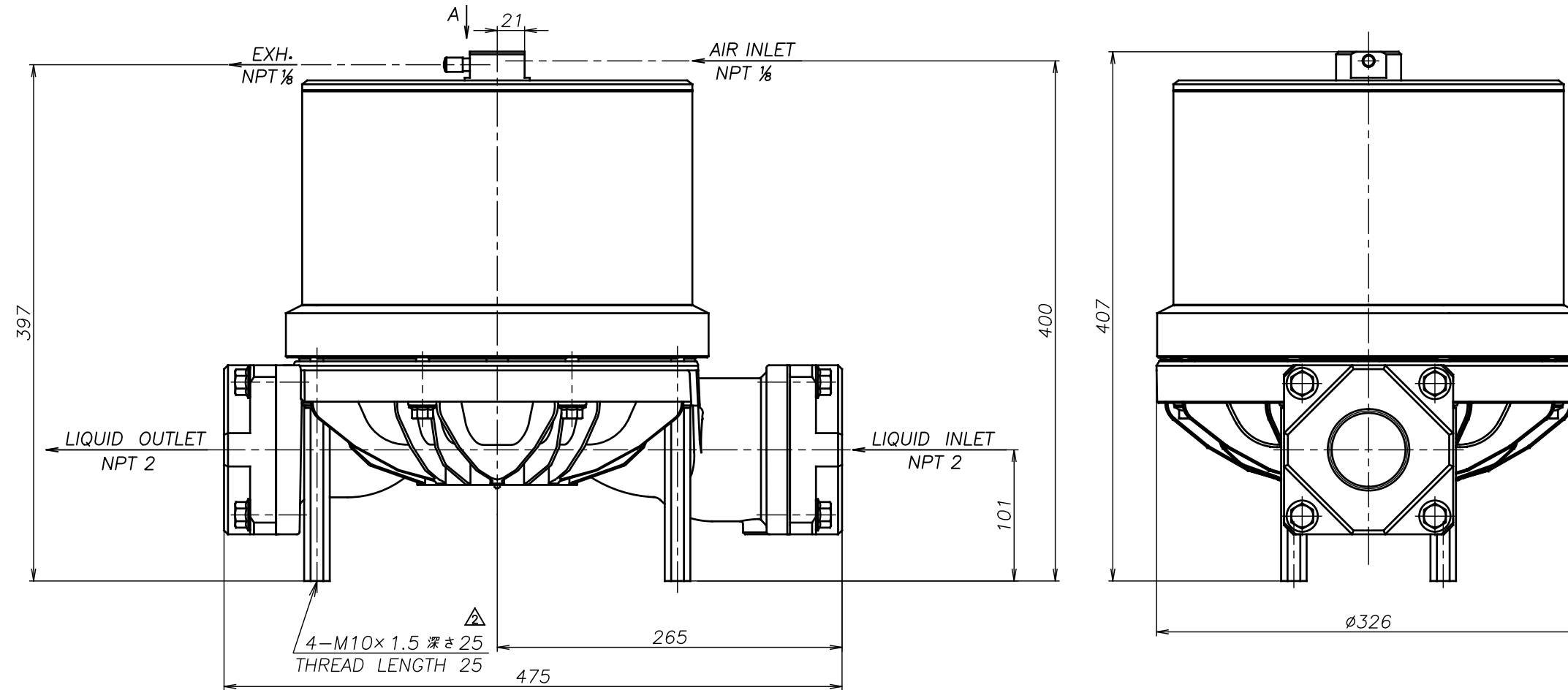


SYM	DWG.NO	CHANGE NO	DATE	REV'D BY
△	ALL	1ME0008	'16. 6.16	S.Murata
△	ALL	1BE0005	'19.10.28	K.Nakada
△	ALL	1BE0006 異記訂正	'20. 6.23	K.Nakada



△ 注1) AIR INLET, EXH.は ※1 の範囲で固定されています
 △ NOTE:1) AIR INLET & EXH. port are fixed in the range of ※1.

△CF-X50ASN	THIRD ANG. PROJ.	DWG.NO.
	SCALE	Free 1M00284YN-C
△CF-X50AHN	THIRD ANG. PROJ.	DWG.NO.
	SCALE	Free 1M00283YN-C
△CF-X50ATN	THIRD ANG. PROJ.	DWG.NO.
	SCALE	Free 1M00282YN-C
△CF-X50AVN	THIRD ANG. PROJ.	DWG.NO.
	SCALE	Free 1M00281YN-C
△CF-X50AEN	THIRD ANG. PROJ.	DWG.NO.
	SCALE	Free 1M00280YN-C
△CF-X50ANN	THIRD ANG. PROJ.	DWG.NO.
	SCALE	Free 1M00279YN-C

APP'D BY '20. 8.18 S.Murata
 CHECKED BY '20. 8.18 K.Nakano
 DRAWN BY '20. 8.18 K.Nakada

THE DWG. OF:
 ダンパアセンブリ
 DAMPER ASSEMBLY
 △CF-X50ACN
 THIRD ANG. PROJ. DWG.NO.
 SCALE Free 1M00278YN-C

YTS Co., Ltd JAPAN